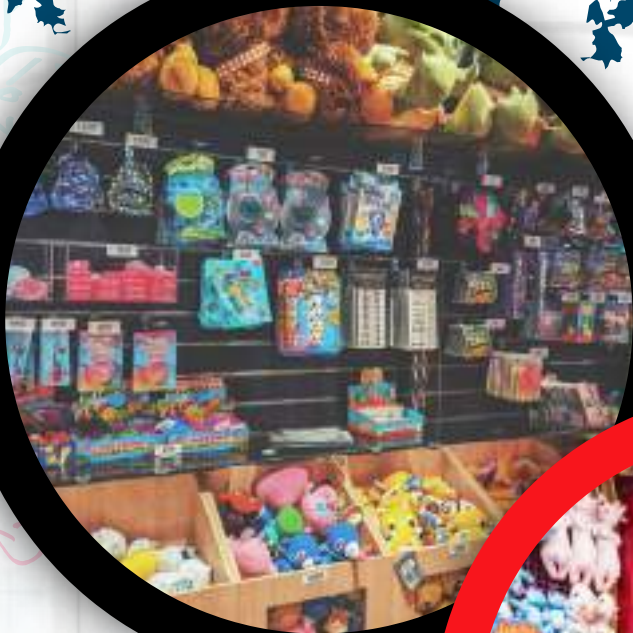


# GLOBAL TOYS .LTD

A SUBSIDIARY OF  
ACE MANUFACTORY LIMITED



**ONE STOP SHOP FOR ALL YOUR TOY NEEDS**  
**SPECIALIZING IN:**  
- Family Entertainment Centers  
- Amusement Parks  
- Claw Machines

Scan to Chat!  
For inquiries, scan the code to start a  
WhatsApp conversation with us.



+85292893242

sales@gloabaltoys.ltd

www.globaltoys.ltd

# GLOBAL TOYS .LTD

## INFLATABLE PLUSH





# GLOBAL TOYS .LTD

## JUMBO PLUSH



## MEDIUM PLUSH



## SMALL PLUSH





# GLOBAL TOYS .LTD

## SQUISHY TOYS



## SMALL REDEMPTION TOYS





GLOBAL TOYS .LTD

# REDEMPTION TOYS



## ARCADE MACHINES

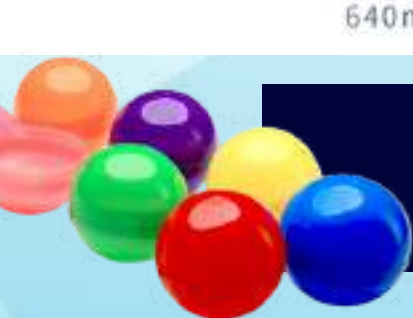
### PRODUCT SIZE



### PRODUCT SIZE



## CAPSULE TOYS






## AMUSEMENT PARK ESSENTIALS (CUSTOM KIT)



# GLOBAL TOYS .LTD

## Supply Chain Intelligence about: Ace Manufactory Ltd.

 Company profile  Hong Kong, China

### Top countries/regions supplied by Ace Manufactory Ltd.

United States  
111 shipments (100.0%)



## ASTM Certificate

  
**ACE MANUFACTORY LIMITED**

**Technical Report:** 16022038-0002  
**Date Received:** Feb 7, 2023  
**Page:** 1 of 8  
**Page 1 of 8**

ACE MANUFACTORY LIMITED  
14 HILLWOOD RD., LEADER COMM. BLDG., 14/F, RM  
7/F, KOWLOON, HONG KONG

Sample Description:	CLASSIC CHARACTERS PLUSH	Sample Size:	1
Vendor:	M/A	Sample Size:	NOT PROVIDED
Manufacturer:	M/A	Sample Size:	NOT PROVIDED
Labelled Age Grade:	NOT PROVIDED	Sample Size:	NOT PROVIDED
Applicable Age Grade:	NOT REQUESTED	Sample Size:	NOT PROVIDED
Client Specified Age Grade:	NOT SPECIFIED	Sample Size:	NOT PROVIDED
Country of Origin:	CHINA	Sample Size:	NOT PROVIDED
UPC Code:	M/A	Sample Size:	NOT PROVIDED
Test Starting Date:	FEB 7, 2023	Sample Size:	NOT PROVIDED

**EXECUTIVE SUMMARY:**

Test Requested	Conclusion
Lead content in substrate requirements of ASTM F963-11, "Standard consumer safety specifications for toy safety", revised & 3.6.2.2.2(a).	PASS
Lead content in substrate requirements in substrate materials (Consumer Products Safety Improvement Act (CPSIA) of 2008).	PASS
Phthalates (DEHP, DBP, BBP, DIBP, DINP, DPHP, DCHP & DPHP) content requirements of the Consumer Product Safety Improvement Act (CPSIA) of 2008 (Sec. 108(a) and 108(c), 16 CFR 1501).	PASS

Note: At the request of client, testing was conducted on the certain component(s) of the submitted sample(s) / submitted component(s).

  
I am the  
Analyst or Test Supervisor

**REMARKS:**  
If there are questions or concerns on this report, please contact the following persons:  
Report Enquiry: (86) 5700 89052999 Ext. 8175 CPSA@globaltoys.com  
Business Contact: (86) 5700 89052999  
This report shall not be reproduced/except in full, without the written approval of our laboratory.

## US Export Data



@globaltoys.ltd



globaltoysltd

Pickup Address- 6250 Ridgewood Road, St. Cloud, MN 56303

Scan to Chat!  
For inquiries, scan the code to start a  
WhatsApp conversation with us.



 +85292893242

 sales@gloabaltoys.ltd

 www.globaltoys.ltd